

# PUBLIC AUCTION

Surplus To The Ongoing Operations Of

## BALDOR®

**Machining, Boring, Electrical Testing &  
Support Equipment**

678 Erie St., Stratford, Ontario



**2015 ZERO HOURS 1 OF 2**

DYNO-ONE MODEL TR2500W4E DYNAMOMETER



**71"X79" 50HP SPINDLE**

UNION MODEL BFT 130/6 HORIZONTAL BORING MILL



**2000 5TH AXIS AVAILABLE**

FRYER MODEL MC50 VERTICAL MACHINING CENTER



**2 SPARE 150CFM PUMPS**

WSF INDUSTRIES VPI SYSTEM

**Auction: Tuesday April 19, 10:30AM (ET)**

**Inspection: Monday April 18, 9 AM to 4 PM**

**Bid Live Onsite  
& Online Via  
BidSpotter.com**

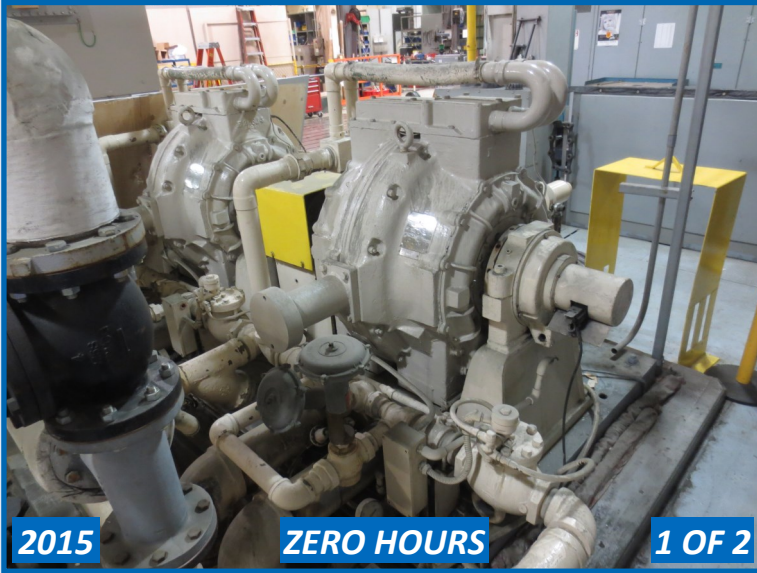


**INFINITY**  
Asset Solutions

infinityassets.com

**AUCTIONEERS  
APPRAISERS • FINANCIERS**  
*...and a lot more!*

63 Maplecrete Road, Concord, Ontario L4K 1A5 Canada  
Tel: (905) 669-8893 • Fax: (905) 669-7512



**2015 ZERO HOURS 1 OF 2**

**DYNO-ONE MODEL TR2500W4E DYNAMOMETER**



**2 SPARE 150CFM PUMPS**

**WSF INDUSTRIES VPI SYSTEM**



**1,000KVA**

**GE—ROCKWELL AC-DC GENERATOR SET**



**JENKINS ELECTRICAL TEST UNIT**

## TEST & ELECTRICAL EQUIPMENT

(2) 2015 **Dyno-one** Model TR2500W4E Dynamometers, 2500HP Maximum absorption capacity from 1400 to 4000 RPM, Maximum Torque rating of 9378 Ft-lbs at 1400 RPM, 90V, 21 Amp field excitation, Rotor Inertia of 640 lb-ft<sup>2</sup>, Bi-directional rotation, 60 tooth gear, housing and cover, Dyno-one modified Bijur Positive Lubrication System, Replacement hoses for lubrication, 61" x 110" Platform footprint, *Note: Located off site at the Manufacturer, see website for details*

**WSF Industries** VPI System, (2) stokes vacuum pumps, 150cfm each, (2) spare vacuum pumps, 81" diameter x 78" depth

**GE—Rockwell** 1000kVA AC—DC Generator Set Consisting of: **GE** model 99159, 1000kVA, 800kW, 2400V, 1200RPM Alternating Current Generator, **GE** model 99158, 780kVA, 1000HP, 2300V Synchronous Motor, **Reliance** 300kW, 1200RPM Type—T Direct Current Generator

**Jenkins** Electrical Test Unit, s/n 206314, 480V/3PH, Short Circuit Rating 100kA

(2) **Allen Bradley** 5000V Switchgears

**Reliance** 900kVA Transformer

**BidSpotter.com** Or Bid By Proxy



**1 OF 2 5,000V**

**ALLEN BRADLEY SWITCHGEAR**



**900KVA**

**RELIANCE TRANSFORMER**

# BORING & MACHINING



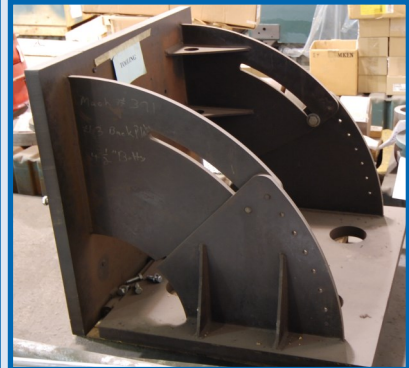
**71"X79"**

**50HP SPINDLE**

**UNION MODEL BFT 130/6 HORIZONTAL BORING MILL, S/N 11013, 71" X 79" T-SLOT POWER ROTARY TABLE, TRAVELS: 90" TABLE, 108" SADDLE, 87" VERTICAL, 42" SPINDLE, 50 TAPER, 50HP SPINDLE, 4.5 TO 900RPM, 31" FACING HEAD WITH 4.5 TO 900RPM, POWER DRAW BAR, PENDANT CONTROLS, MINIMUM BORING DIAMETER 22", HEIDENHAIN 3 AXIS DRO, OUTRIGGER TABLE SUPPORTS, BORING BAR, (2) NEW BARRELS**



**5' X 5' X 5" ANGLE PLATE**



**44" X 40" X 36" ANGLE PLATE**



**(2) NEW BARRELS**



**2000**

**5TH AXIS AVAILABLE**

**2000 FRYER MODEL MC50 VERTICAL MACHINING CENTER, S/N 50523, 63" X 20" TABLE, TRAVELS: X-50", Y-30", Z-26", 40 TAPER, ANILAM 5400 M CONTROL**



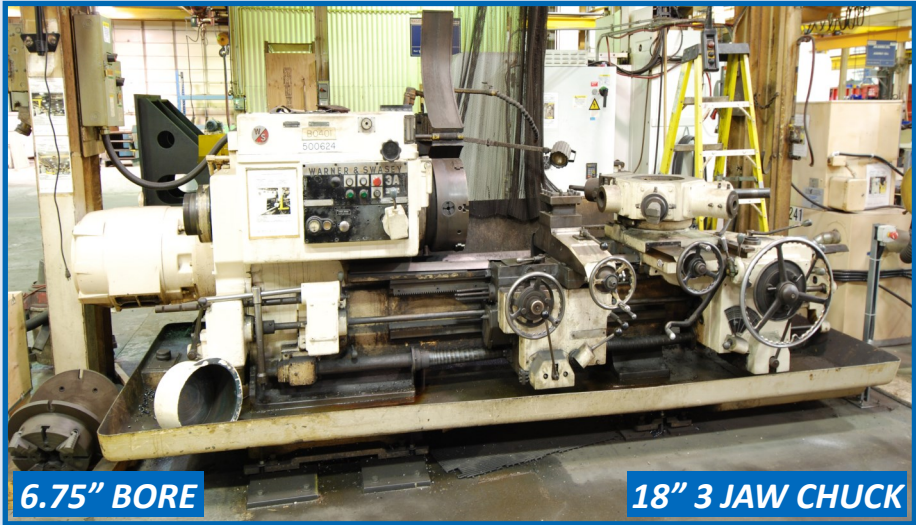
**YUASA INTERNATIONAL 5TH AXIS**

**Visit [infinityassets.com](http://infinityassets.com) to view complete specs & additional photos**



**48" TABLE**

**WEBSTER BENNET VERTICAL TURNING BORING LATHE**



**6.75" BORE**

**18" 3 JAW CHUCK**

**WARNER SWASEY MODEL 3A TURRET LATHE**



**3,000,000 BTUH**

**GASMAC CAR BOTTOM FURNACE**



**4,200RPM**

**SUPERMAX MILLING MACHINE**



**64" ARM**

**ARCHDALE RADIAL ARM DRILL**

## LATHES

**WEBSTER BENNET** Vertical Turning Boring Lathe, s/n 6755-2, 48" diameter table, 61" max swing, ram travel 45", maximum height under tool 43", maximum height under rail 50", maximum weight of workpiece 10,000lbs

**WARNER SWASEY** model 3A Turret Lathe, swing over carriage 18", 18" 3 jaw chuck, cross travel 15 1/2", spindle to turret 4 3/8" minimum, 58 3/4" maximum, 6.75" bore, 6 station turret, tool post

## MILLS & RADIAL DRILLS

**SUPERMAX TITAN SERIES** model YC-1 5VS-T Milling Machine, s/n T8805724, 49" X 9" table, table travel 33", cross travel 11 1/4", distance under spindle 16", 4,200RPM, Bridgeport shaping attachment, 70-420 strokes/min, servo power feed, Milvision Acurite DRO

**ARCHDALE** Radial Arm Drill, s/n RD 12445, 64" arm, maximum height from base 53", spindle travel 15", 1000RPM, 26" x 18" x 24" box table

## STRESS RELIEF OVEN

**GASMAC** Car Bottom Furnace, s/n JW970818, 3,000,000 BTUH, max temperature 1150 F, Width 96", Depth 168", Height 93"

*Visit [infinityassets.com](http://infinityassets.com) to view complete specs & additional photos*



2009

GARDNER DENVER 30HP COMPRESSOR



GARDNER DENVER 50HP AIR COMPRESSOR



2002

INGERSOLL RAND 30HP AIR COMPRESSOR



1 OF 2

4,000LB CAPACITY

RAYMOND REACH TRUCK



2009

1 OF 3

10' X 15' TESTING FLOOR PLATE



RUSH WIRE STRIPPER

# AIR COMPRESSORS

2009 **GARDNER DENVER** Model VS-25 30HP Air Compressor, s/n S 306 996

**GARDNER DENVER** Model ECH QJB 50HP Air Compressor, s/n 803434

2002 **INGERSOLL RAND** Model SSR-UP6-30-125 30HP Air Compressor, s/n PX0429U02203

# MATERIAL HANDLING

**RAYMOND** Reach Truck Model EASI R40TT, s/n ET-D-03-12331, 4000lb capacity, 189" max lift, 24V

**RAYMOND** Reach Truck Model EASI R40TT, s/n ET-D-01-10656, 4000lb capacity, 186" max lift, 24V

# SUPPORT EQUIPMENT

**REMSTAR** Model Shuttle—1250X825 Vertical Storage Unit, s/n 95008135/001, 62.2" width, 105.2" depth, 207.09" height, 44000lb capacity, 84 trays

2009 10' x 15' Testing Floor Plate

15' x 15' Testing Floor Plate

25' x 7' Testing Floor Plate

**RUSH** Wire Stripper

**ELECTRIC ARC** Model 3-s Metal Disintegrator

**CHURCHILL** 18" x 6" Surface Grinder, s/n 328

**Bid Live Onsite & Online Via BidSpotter.com**



**44,000LB  
CAPACITY**

**REMSTAR STORAGE UNIT**



**CHURCHILL SURFACE GRINDER**



**WASH TANK**



**100 TON H-FRAME**



**HEAVY DUTY STEEL TABLE**

# SUPPORT EQUIPMENT

100 Ton H—Frame Press  
**DAKE** H—Frame Press  
Vertical Bandsaw  
**BUFFALO** No. 18-0 Drill Presses, 1” capacity, 3000RPM max  
Wash Tank, 42”W x 84”L x 30”H  
**ACORN PLATENS & TOOLS** Heavy Duty Steel Table, 8’L x 5’W x 1.75” Thick  
**IXL** Precision Granite Surface Plate, 36” L x 30”W x 6”H  
**SYLVAC FOWLER** Model Z\_CAL 600 XT Height Gauge

# MISCELLANEOUS

Pedestal grinders, Beach, Craftsmen & Mastercraft Toolboxes, 5’ x 3’ scissor table w/ arbor press, shelving with assorted parts, Banner & Lista tool cabinets, mag drills, pallet racking, metal pallets, Legacy & Retracta hose reels, warehouse fans, chop saws, shop vacs, warehouse ladders, steel tables & carts, micrometers, punch kits, dump hoppers, paint pots, paint booth, machine vises, office furniture & cubicles, employee lockers, and much more!

*Visit [infinityassets.com](http://infinityassets.com) to view complete specs & additional photos*



**VERTICAL BANDSAW**



**DRILL PRESS**



**SYLVAC HEIGHT GAUGE**



**IXL PRECISION GRANITE SURFACE PLATE**

## TERMS OF SALE

**Payment:** All payments must be in Cash, Certified Funds, Wire Transfers, or Company Checks, which must be accompanied with a bank letter guaranteeing irrevocable payment to Infinity Asset Solutions Inc. Invoices up to \$2,000 can be paid by Visa, Mastercard or Interac.  
All Online bidders must register on Bidspotter by 5pm Monday April 18.  
A 15% buyers premium will be added to all onsite purchases (18% Online).  
A \$500 refundable security deposit is required upon onsite registration (\$2,000 Online).  
A 25% deposit is required at time of purchase, balance due by 4pm Wednesday April 20, 2016. **NO EXCEPTIONS.**  
All goods are sold “As Is, Where Is”, **ALL SALES ARE FINAL.** All subject to prior sale. Complete terms and conditions including removal procedures, are available on our website and will be provided at the time of registration.

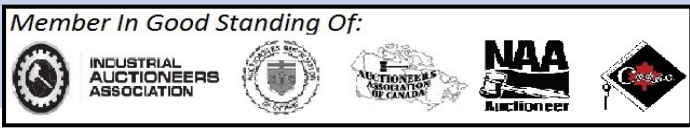
*This brochure is meant merely as a guide. Infinity Asset Solutions makes no guarantee, expressed or implied, as to the accuracy of the information in this brochure. Buyers should inspect the goods beforehand to satisfy themselves.*

## REMOVAL TIMES

All items by Friday April 29, 2016.  
**Hours:** Monday—Friday between 8 am—4 pm.  
No items may be removed during auction. **NO EXCEPTIONS**

## DIRECTIONS:

From Toronto Pearson Intl Airport to 678 Erie Street, Stratford. Get onto ON-427 S. Take ON-401 W to Exit 278 ON-8 toward Kitchener/Waterloo. Take ON-7 W Exit toward Stratford. Turn left onto Perth Road/Perth 107. Turn right onto Perth County Line 33. Continue onto Lorne Ave E. Turn left onto Erie Street. Destination will be on the right.



**• AUCTIONS • LIQUIDATIONS  
• FINANCING • APPRAISALS**  
63 Maplecrete Road, Concord, Ontario L4K 1A5 Canada  
[infinityassets.com](http://infinityassets.com) • Tel: (905) 669-8893 • Fax: (905) 669-7512